



Existing North Elevation - 3rd Street (Overall)

Scale: 1/16" = 1'-0"

Proposed 1



Proposed North Elevation - 3rd Street (Overall)

Scale: 1/16" = 1'-0"



Existing North Elevation- 3rd Street (Close-Up)

Scale: 3/16" = 1'-0"

Proposed 1



Proposed North Elevation - 3rd Street (Close-Up)

Scale: 3/16" = 1'-0"



P.O. Box 8406
Stockton, CA 95208-0406
(209) 941-2921



U.S. HealthWorks
420 3rd Street
Los Angeles, CA

Salesperson: Mike Behnke
(209) 941-2921 Ex. 117
Email: mike.behnke@mina-treesigns.com

Date: 07.29.16

Designer: Jason Cary

File Path: AOS\Comm\USHW\CA\LosAngeles\4203rdSt\4203rdStSigns07.29.16.cdr

Page: 1 of 5

Revision:	
Jason Cary	08.31.16
Jason Cary	09.23.16
Curtis Minatre	03.27.17
Donnie Martinez	03.30.17

Approved By: _____
Date: _____

This design is the exclusive property of MINA-TREE SIGNS INCORPORATED. It is loaned as part of an advertising or identification program being planned for you by MINA-TREE SIGNS INCORPORATED. It is requested that this material is not to be shown or otherwise divulged until transferred by actual sale.

East Elevation

SCALE:
AS NOTED



46"

Existing South Elevation - Boyd St (Overall)

Scale: 1/32" = 1'-0"



Proposed 2

Proposed South Elevation - Boyd St (Overall)

Scale: 1/32" = 1'-0"



46"

Existing South Elevation - Boyd St (Close-Up)

Scale: 3/32" = 1'-0"

Proposed 2



Proposed South Elevation - Boyd St (Close-Up)

Scale: 3/32" = 1'-0"



P.O. Box 8406
Stockton, CA 95208-0406
(209) 941-2921



A Dignity Health Member

U.S. HealthWorks
420 3rd Street
Los Angeles, CA

Salesperson: Mike Behnke
(209) 941-2921 Ex. 117
Email: mike.behnke@mina-treesigns.com

Date: 07.29.16

Designer: Jason Cary

File Path: AOS\Comm\USHW\CA\LosAngeles\4203rdSt\4203rdStSigns07.29.16.cdr

Page: 2 of 5

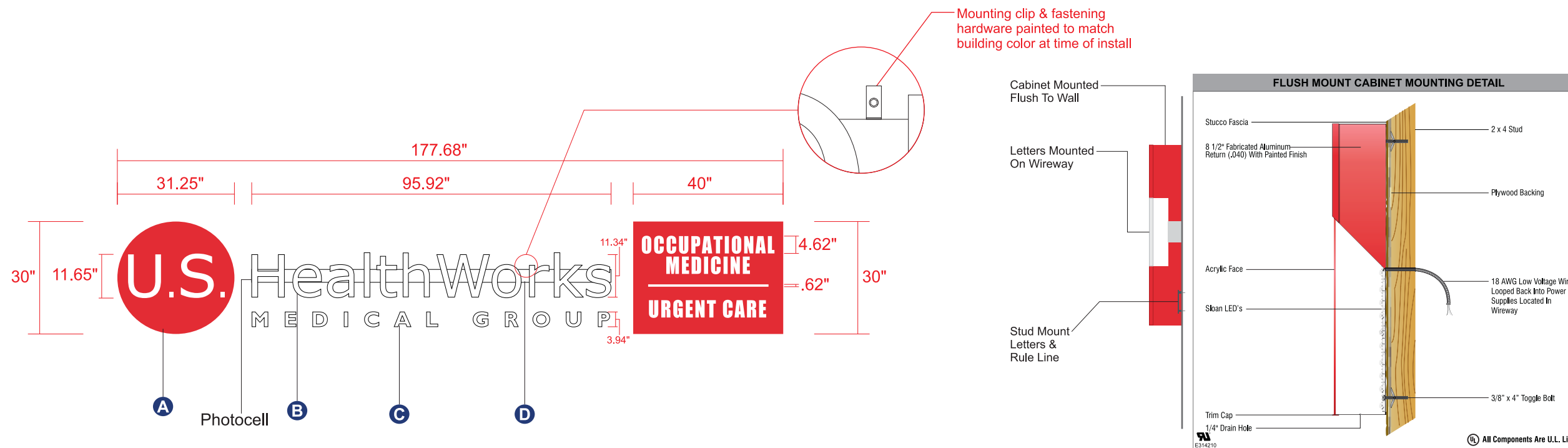
Revision:	
Jason Cary	08.31.16
Jason Cary	09.23.16
Curtis Minatre	03.27.17
Donnie Martinez	03.30.17

Approved By: _____
Date: _____

This design is the exclusive property of MINA-TREE SIGNS INCORPORATED. It is loaned as part of an advertising or identification program being planned for you by MINA-TREE SIGNS INCORPORATED. It is requested this material is not to be shown or otherwise divulged until transferred by actual sale.

East Elevation

SCALE:
AS NOTED



MSI
MINA-TREE SIGNS
 Incorporated
 P.O. Box 8406
 Stockton, CA 95208-0406
 (209) 941-2921

U.S. HealthWorks
 MEDICAL GROUP
 A Dignity Health Member
 U.S. HealthWorks
 420 3rd Street
 Los Angeles, CA

Salesperson: Mike Behnke
 (209) 941-2921 Ex. 117
 Email: mike.behnke@mina-treesigns.com

Date: 07.29.16

Designer: Jason Cary

File Path: AOS\Comm\USHW\CA\LosAngeles\4203rdSt\4203rdStSigns07.29.16.cdr

Page: 3 of 5

Revision:

Jason Cary	08.31.16
Jason Cary	09.23.16
Curtis Minatre	03.27.17
Donnie Martinez	03.30.17

Approved By: _____
 Date: _____

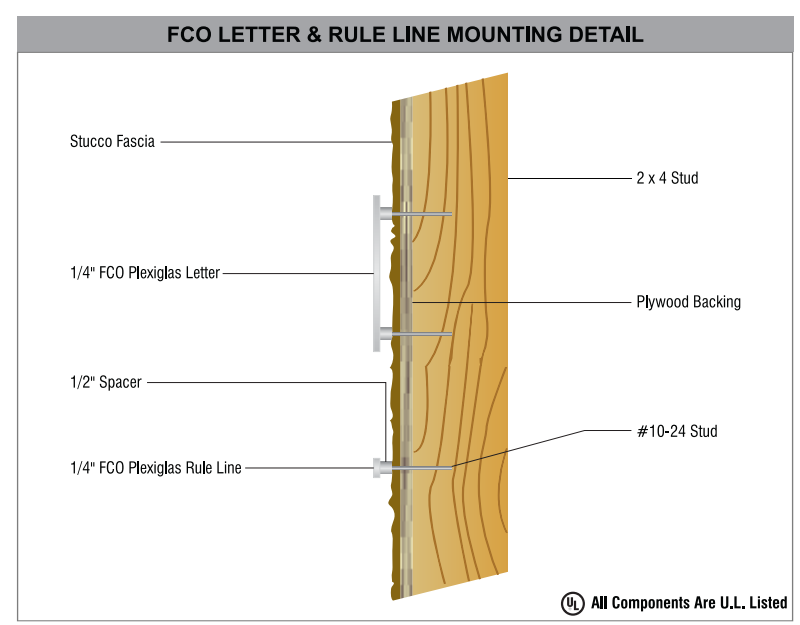
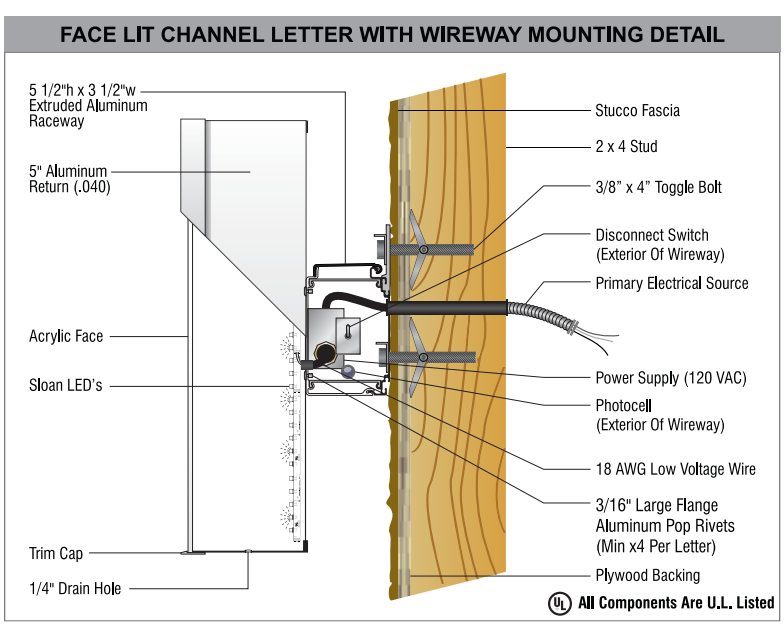
This design is the exclusive property of MINA-TREE SIGNS INCORPORATED. It is loaned as part of an advertising or identification program being planned for you by MINA-TREE SIGNS INCORPORATED. It is requested this material is not to be shown or otherwise divulged until transferred by actual sale.

1 Proposed S/F Illuminated Wall Sign

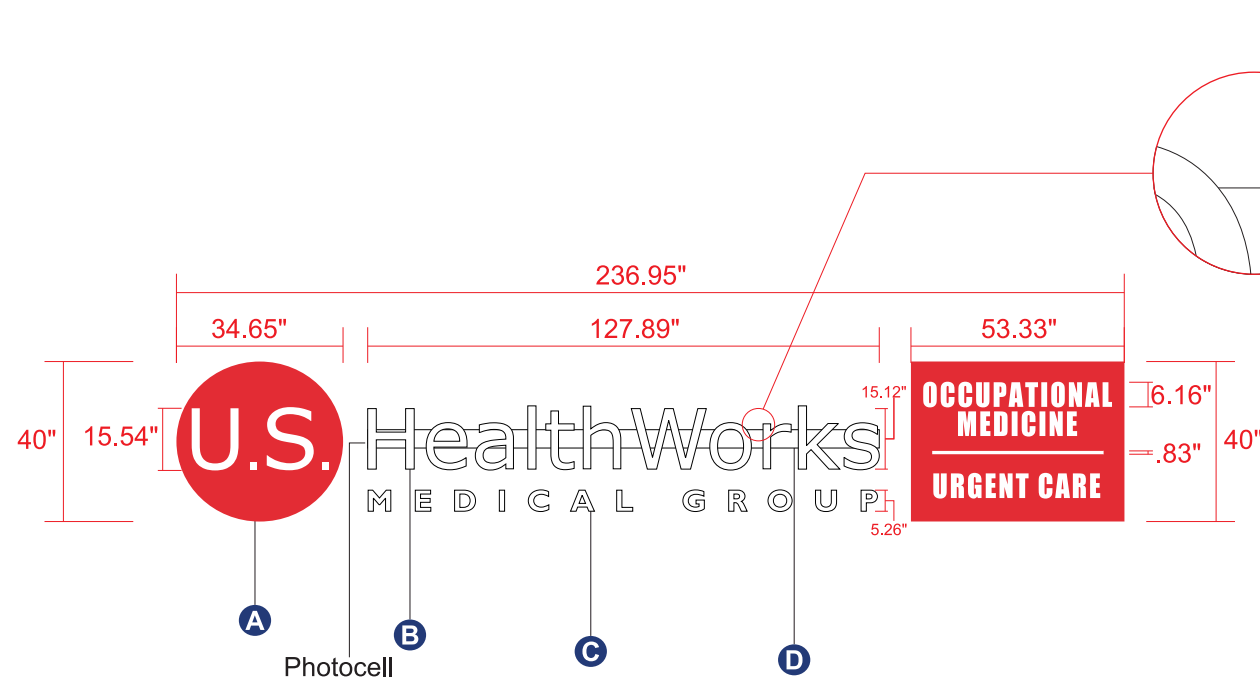
Scale: 3/8" = 1'-0"

ALL COMPONENTS ARE U.L. LISTED

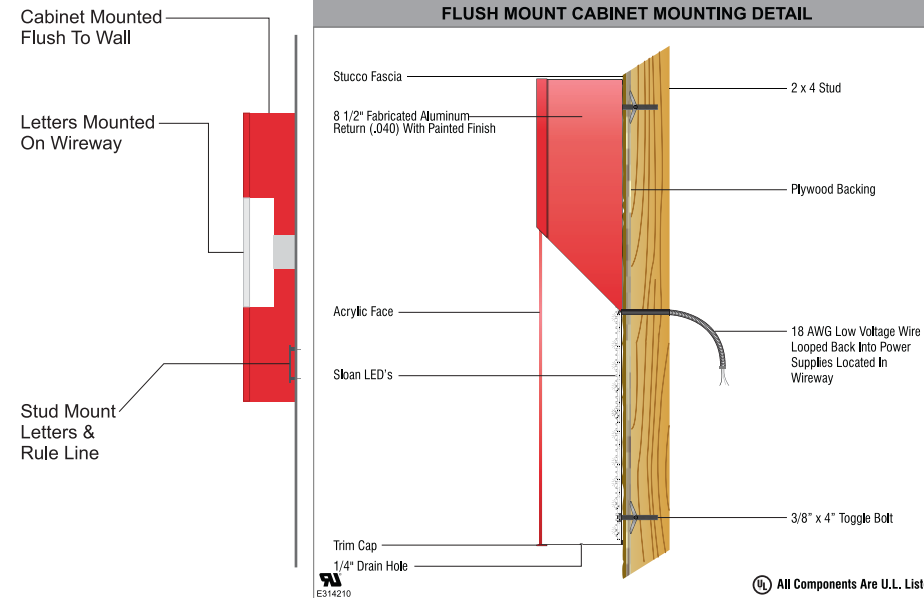
- A Logo Unit:**
 Single face fabricated aluminum logo unit. Aluminum constructed .040 thick, internally illuminated with Sloan bright white LED lighting. White acrylic face with Avery A9308-T Strawberry Red vinyl. White illuminated copy, painted returns & retainer to match PMS 185C Red.
- B HealthWorks Channel Letters:**
 Fabricated aluminum, individual channel letters. Constructed from .040" aluminum. White acrylic faces with trim caps painted white. Internally illuminated with Sloan bright white LED lighting, flush mounted to raceway. Power supplies concealed in raceway.
- C Medical Group:**
 Cut out 1/4" thick letters. FCO letters painted white. Stud mounted 1/2" from wall.
- D Raceway:**
 Fabricated aluminum raceway. Painted to match fascia COLOR: _____ Power supplies concealed inside raceway. Attachment method varies per location.



Detail Page SCALE: AS NOTED



Mounting clip & fastening hardware painted to match building color at time of install



P.O. Box 8406
Stockton, CA 95208-0406
(209) 941-2921



A Dignity Health Member
U.S. HealthWorks
420 3rd Street
Los Angeles, CA

Salesperson: Mike Behnke
(209) 941-2921 Ex. 117
Email: mike.behnke@mina-treesigns.com

Date: 07.29.16

Designer: Jason Cary

File Path: AOS\Comm\USHW\CA\LosAngeles\4203rdSt\4203rdStSigns07.29.16.cdr

Page: 4 of 5

Revision:	
Jason Cary	08.31.16
Jason Cary	09.23.16
Curtis Minatre	03.27.17

Approved By: _____
Date: _____

This design is the exclusive property of MINA-TREE SIGNS INCORPORATED. It is loaned as part of an advertising or identification program being planned for you by MINA-TREE SIGNS INCORPORATED. It is requested this material is not to be shown or otherwise divulged until transferred by actual sale.

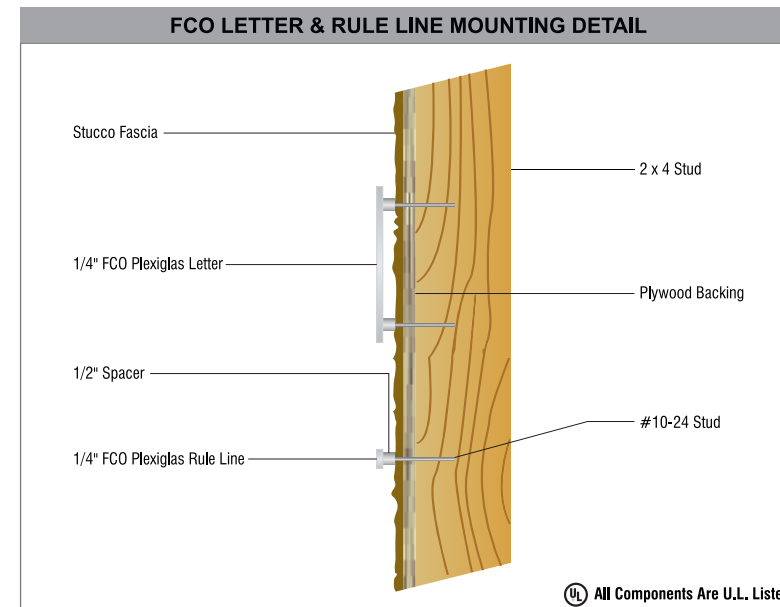
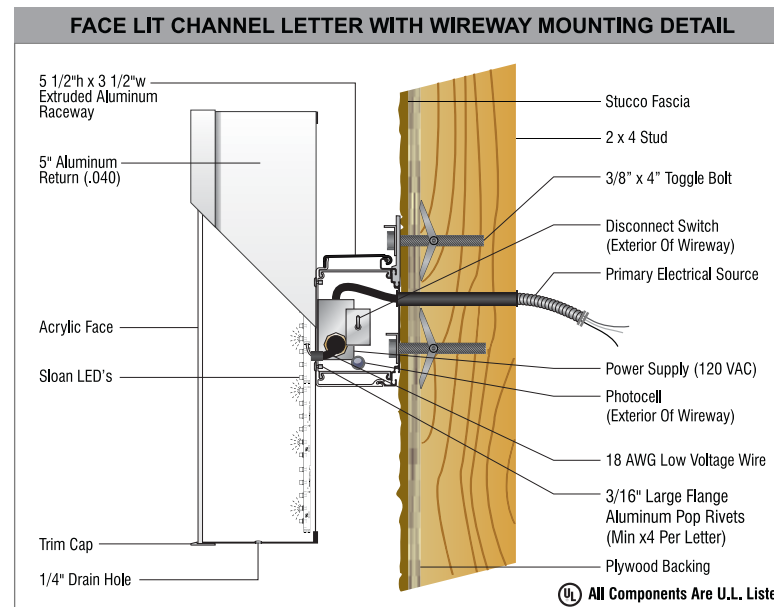
2 Proposed S/F Illuminated Wall Sign

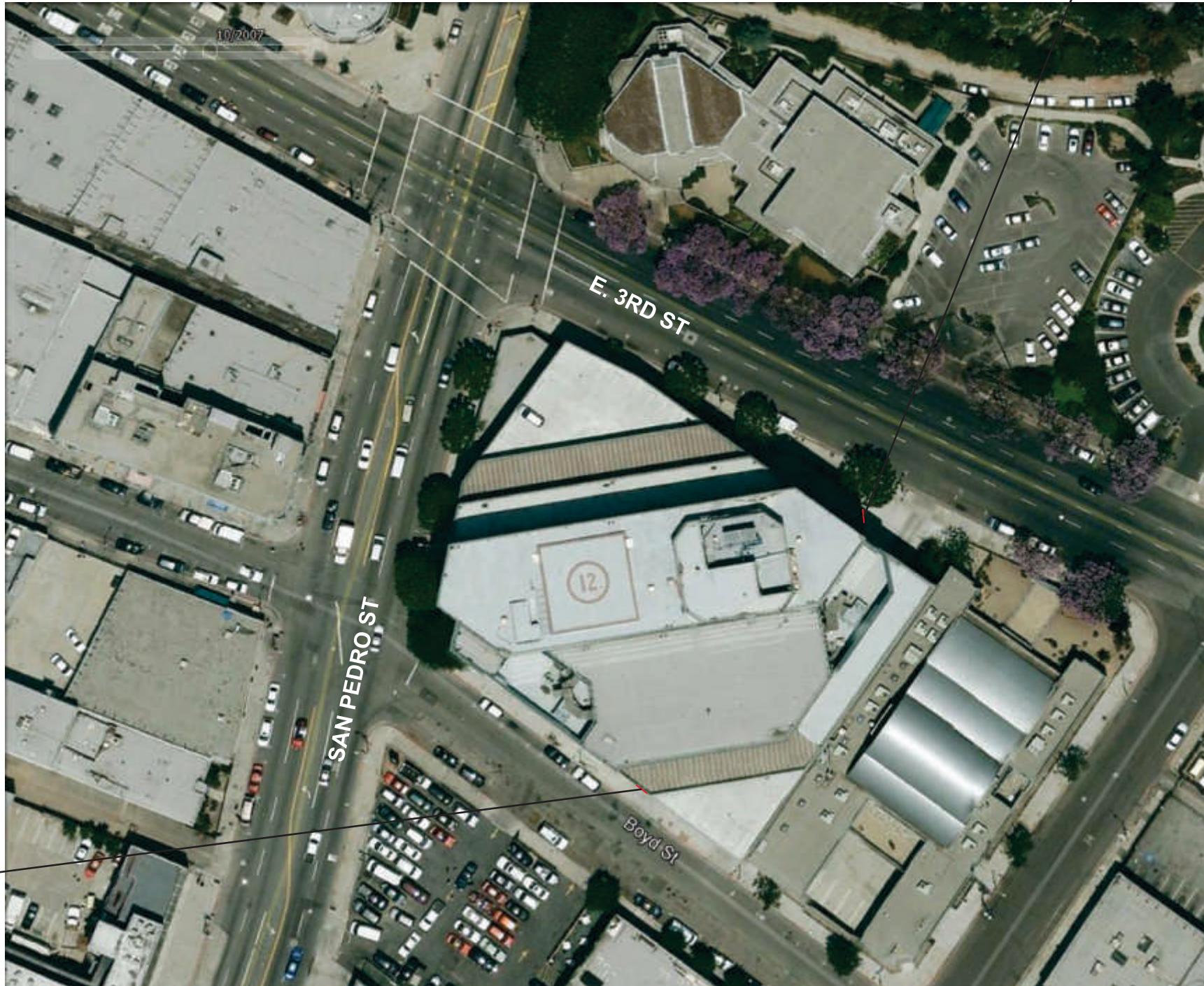
Scale: 1/4" = 1'-0"



ALL COMPONENTS ARE U.L. LISTED

- A Logo Unit:**
Single face fabricated aluminum logo unit.
Aluminum constructed .040 thick, internally illuminated with Sloan bright white LED lighting.
White acrylic face with Avery A9308-T Strawberry Red vinyl.
White illuminated copy, painted returns & retainer to match PMS 185C Red.
- B HealthWorks Channel Letters:**
Fabricated aluminum, individual channel letters.
Constructed from .040" aluminum.
White acrylic faces with trim caps painted white.
Internally illuminated with Sloan bright white LED lighting, flush mounted to raceway.
Power supplies concealed in raceway.
- C Medical Group:**
Cut out 1/4" thick letters.
FCO letters painted white.
Stud mounted 1/2" from wall.
- D Raceway:**
Fabricated aluminum raceway.
Painted to match fascia COLOR: _____
Power supplies concealed inside raceway.
Attachment method varies per location.





1 Proposed



Proposed 2



P.O. Box 8406
Stockton, CA 95208-0406
(209) 941-2921



A Dignity Health Member
U.S. HealthWorks
420 3rd Street
Los Angeles, CA

Salesperson: Mike Behnke
(209) 941-2921 Ex. 117
Email: mike.behnke@mina-treesigns.com

Date: 07.29.16

Designer: Jason Cary

File Path: AOS\Comm\USHW\CA\LosAngeles\4203rdSt\4203rdStSigns07.29.16.cdr

Page: 5 of 5

Revision:	
Jason Cary	08.31.16
Jason Cary	09.23.16
Curtis Minatre	03.27.17
Donnie Martinez	03.30.17

Approved By: _____
Date: _____

This design is the exclusive property of MINA-TREE SIGNS INCORPORATED. It is loaned as part of an advertising or identification program being planned for you by MINA-TREE SIGNS INCORPORATED. It is requested this material is not to be shown or otherwise divulged until transferred by actual sale.

SP

Site Plan

Scale: NTS

Site Plan

SCALE:
AS NOTED

SP